



GOOD MORNING  
Have Good Trading Day

FRIDAY



Price is what you pay.  
Value is what you get.

- Warren Buffet



## MARKET PULSE

### INDIAN INDICES

| NAME   | CMP   | NET CH. | %     |
|--------|-------|---------|-------|
| SENSEX | 27308 | +50     | +0.19 |
| NIFTY  | 8435  | +18     | +0.22 |

### INDIAN ADR'S

| SYMBOL    | CLOSE | GAIN/ LOSS % |
|-----------|-------|--------------|
| DRREDDY   | 43.2  | -0.56        |
| HDFCBANK  | 64.05 | -0.26        |
| ICICIBK   | 7.77  | -0.16        |
| INFY      | 14.39 | -0.05        |
| TATAMOTOR | 38.76 | +0.41        |
| WIPRO     | 9.76  | 0.00         |

### FII AND MF ACTIVITY

| SYMBOL                 | In Crs. |
|------------------------|---------|
| FIIs Eq (Provisional)  | -132    |
| FIIs Index Future      | -209    |
| FIIs Index Options     | 120     |
| FIIs Stock Future      | 589     |
| FIIs Stock Options     | -70     |
| DII's Eq (Provisional) | 379     |

### CURRENCY

| RBI RATE   | 19-JAN-2017 |
|------------|-------------|
| RUPEE - \$ | 68.1766     |
| EURO       | 72.5194     |
| YEN 100    | 59.4800     |
| GBP        | 83.6936     |

## MARKET PULSE

### GLOBAL INDICES

| NAME      | CMP   | NET CH. | %     |
|-----------|-------|---------|-------|
| DOW       | 19732 | -72     | -0.37 |
| NASDAQ    | 5540  | -15     | -0.28 |
| NIKKEI    | 19088 | +15     | +0.08 |
| HANG SENG | 22919 | -130    | -0.58 |
| SGX NIFTY | 8425  | -16     | -0.20 |

### WORLD COMMODITIES

| FUTURE      | U\$    | CHANGES |
|-------------|--------|---------|
| CRUDE       | 51.54  | +0.17   |
| NATURAL GAS | 3.300  | -0.060  |
| GOLD        | 1206.4 | +4.9    |
| SILVER      | 17.050 | +0.053  |
| COPPER      | 2.6180 | +0.0075 |

### WORLD EVENTS

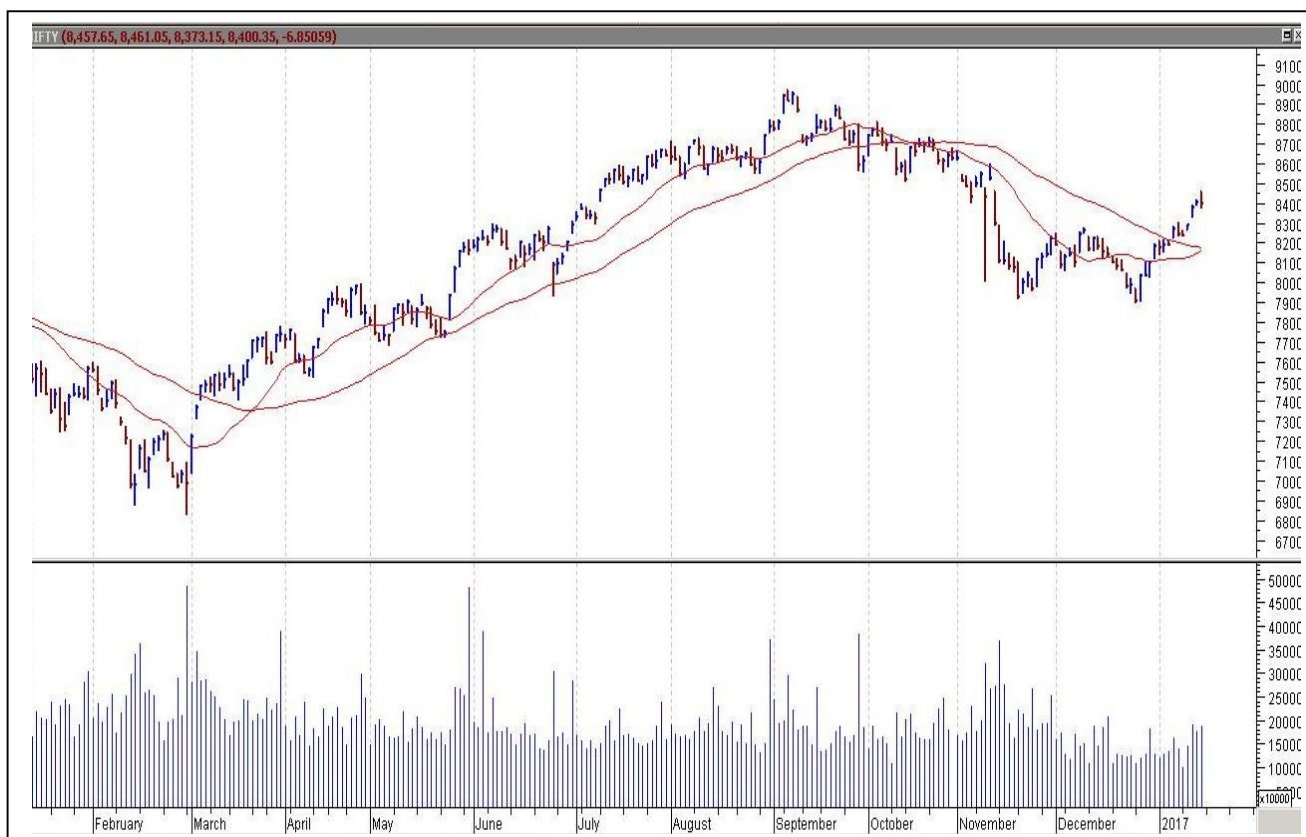
- US: President-Elect Trump Speaks
- UK: Retail Sales m/m

## TOP STORY

- Bajaj Auto launches 2 new KTM Variants.
- Havells India to enter into electronic personal care category.
- Tata Steel - CARE downgrades by a notch citing UK issues.
- TVS Motor gets patent for cellphone ring detecting device.
- Sterlite Technologies, Kalpataru Power etc in focus - Railways to Float `8000 Cr worth Tenders for Transmission.
- Ruchi Soya buzzing on Patanjali Deal.
- Orient Green Power: Approved Entering Exclusive Discussions With ILFS Wind Energy.
- Axis Bank Q3 Net Profit Down 73.4% At `579.6 Cr Vs `2,175.3 Cr (YoY).
- GMR Infrastructure: Delhi Intl Airport Issues LoA For Retail Dvpt Project To Bharti Realty.
- CCI: Imposes Penalty On 7 Cement Cos For Bid Rigging Of A Tender In 2012.



## NIFTY CHART



## MARKET COMMENTARY

Indian benchmarks indices carried forward their northbound journey for yet another session on Thursday, ended slightly higher as investors awaited fresh triggers amid an uncertain global scenario. It turned out to be a rather volatile day of trade as the indices rebounded after drifting to lower levels in the morning session as sustained position build up was witnessed in several frontline stocks. Sentiments got some support with Minister for Road Transport and Shipping Nitin Gadkari's statement that it is the appropriate time to invest in India and added that the country is also working on ways to improve purchasing power of common men as that will present further opportunities. Further, market participants got some comfort with the private report indicating that strong domestic demand and cost competitiveness in exports will help Indian companies to overcome uncertainties from global geopolitical changes and domestic policy-making. For today's trade Nifty likely to trade in the range between 8445 – 8465 in the upper side and 8415 – 8395 in the lower side.

## MARKET LEVELS

|        | CMP   | SUPPORT LEVELS |      |      |      | RESISTANCE LEVELS |      |      |      |
|--------|-------|----------------|------|------|------|-------------------|------|------|------|
| NIFTY  | 8435  | 8415           | 8395 | 8375 | 8355 | 8445              | 8465 | 8485 | 8525 |
| USDINR | 68.19 | 68.1           | 68   | 67.9 | 67.8 | 68.3              | 68.4 | 68.5 | 68.6 |





#### BULK DEALS (BSE)

| SCRIP    | CLIENT NAME   | BUY/SELL | QUANTITY  | PRICE  |
|----------|---|----------|-----------|--------|
| CHOLAFIN | DYNASTY ACQUISITION (FDI) LTD                         | S        | 3,748,032 | 975.04 |
| CHOLAFIN | DYNASTY ACQUISITION (FDI) LTD                         | S        | 1,642,918 | 976.54 |
| CHOLAFIN | STICHTING DEPOSITARY APG EMERGING MARKETS EQUITY POOL | B        | 1,066,943 | 975    |
|          |   |          |           |        |
|          |   |          |           |        |

#### BULK DEALS (NSE)

| SCRIP      | CLIENT NAME                                   | BUY/SELL | QUANTITY | PRICE  |
|------------|---|----------|----------|--------|
| PIONEEREMB | PIONEER E-COM FASHIONS LLP                    | SELL     | 280000   | 58.12  |
| PIONEEREMB | ZIGMA CAPITAL FINANCE P LTD                   | SELL     | 225526   | 58.81  |
| STAMPEDE   | USHA RANI MEENAVALLI                          | SELL     | 2100000  | 24.13  |
| STCINDIA   | SMITHBLOCK FINANCIAL SERVICES PRIVATE LIMITED | SELL     | 440734   | 211.45 |
| VIVIDHA    | RASHEL AGROTECH LIMITED                       | BUY      | 3591982  | 2.3    |

#### SCRIP'S IN F&O BAN

(To resume for normal trading below 80% of market wide limit required)

CENTURYTEX,IBREALEST,JINDALSTEL,JPASSOCIAT,JUSTDIAL,HDIL,RCOM ,JISLJALEQS

#### Initial Public Offering (IPO)

| Company Name | Security type | Issue Start Date | Issue End Date | Status      |
|--------------|---------------|------------------|----------------|-------------|
| BSE Limited  | Equity        | 23-Jan-2017      | 25-Jan-2017    | Forthcoming |
|              |               |                  |                |             |



### NIFTY 50 STOCKS: SUPPORT & RESISTANCE

| Symbol      | Close | Support 1 | Support 2 | Pivot Point | Resistance1 | Resistance2 |
|-------------|-------|-----------|-----------|-------------|-------------|-------------|
| ACC         | 1361  | 1346      | 1332      | 1357        | 1372        | 1383        |
| ADANI PORTS | 295   | 292       | 289       | 295         | 298         | 300         |
| AMBUJACEM   | 220   | 218       | 215       | 219         | 222         | 224         |
| ASIANPAINT  | 963   | 956       | 950       | 961         | 968         | 972         |
| AUROPHARMA  | 715   | 708       | 701       | 719         | 726         | 738         |
| AXISBANK    | 484   | 479       | 475       | 484         | 488         | 492         |
| BAJAJ-AUTO  | 2695  | 2681      | 2666      | 2696        | 2711        | 2727        |
| BANKBARODA  | 160   | 158       | 157       | 160         | 161         | 163         |
| BHARTIARTL  | 317   | 311       | 305       | 317         | 323         | 329         |
| BHEL        | 132   | 131       | 130       | 133         | 134         | 136         |
| BOSCH LTD   | 21245 | 21056     | 20868     | 21201       | 21389       | 21534       |
| BPCL        | 674   | 660       | 646       | 668         | 682         | 691         |
| CIPLA       | 580   | 573       | 566       | 580         | 587         | 594         |
| COALINDIA   | 307   | 306       | 304       | 308         | 310         | 312         |
| DRREDDY     | 2940  | 2924      | 2908      | 2949        | 2966        | 2991        |
| EICHERMOT   | 22822 | 22312     | 21802     | 22696       | 23206       | 23590       |
| GAIL        | 462   | 444       | 426       | 454         | 472         | 483         |
| GRASIM      | 865   | 859       | 853       | 864         | 870         | 875         |
| HCLTECH     | 844   | 837       | 831       | 844         | 851         | 858         |
| HDFC        | 1242  | 1233      | 1224      | 1242        | 1252        | 1261        |
| HDFCBANK    | 1236  | 1233      | 1229      | 1239        | 1242        | 1249        |
| HEROMOTOCO  | 3102  | 3075      | 3048      | 3093        | 3120        | 3138        |
| HINDALCO    | 176   | 174       | 172       | 176         | 178         | 179         |
| HINDUNILVR  | 860   | 854       | 848       | 865         | 871         | 882         |
| ICICIBANK   | 270   | 267       | 264       | 269         | 272         | 273         |
| IDEA        | 69    | 68        | 66        | 69          | 71          | 72          |
| INDUSINDBK  | 1220  | 1211      | 1201      | 1220        | 1230        | 1240        |
| INFRA TEL   | 358   | 351       | 345       | 356         | 362         | 367         |
| INFY        | 958   | 951       | 944       | 955         | 962         | 967         |
| ITC         | 254   | 251       | 248       | 253         | 256         | 258         |
| KOTAKBANK   | 728   | 724       | 721       | 731         | 734         | 741         |
| LT          | 1449  | 1442      | 1435      | 1453        | 1460        | 1470        |
| LUPIN       | 1479  | 1465      | 1450      | 1485        | 1499        | 1519        |
| M&M         | 1211  | 1204      | 1198      | 1209        | 1215        | 1220        |
| MARUTI      | 5718  | 5686      | 5654      | 5707        | 5739        | 5760        |
| NTPC        | 174   | 172       | 170       | 174         | 176         | 177         |
| ONGC        | 201   | 198       | 195       | 200         | 203         | 204         |
| POWERGRID   | 202   | 198       | 194       | 201         | 205         | 207         |
| RELIANCE    | 1034  | 1028      | 1022      | 1037        | 1042        | 1051        |
| SBIN        | 258   | 256       | 253       | 259         | 261         | 264         |
| SUNPHARMA   | 643   | 638       | 633       | 646         | 651         | 659         |
| TATAMOTORS  | 531   | 524       | 517       | 530         | 537         | 543         |
| TATAMTRDVR  | 337   | 330       | 323       | 335         | 342         | 347         |
| TATAPOWER   | 79    | 79        | 78        | 79          | 80          | 80          |
| TATASTEEL   | 467   | 463       | 460       | 466         | 470         | 473         |
| TCS         | 2291  | 2284      | 2278      | 2290        | 2296        | 2302        |
| TECHM       | 481   | 477       | 474       | 481         | 485         | 489         |
| ULTRACEMCO  | 3461  | 3419      | 3376      | 3468        | 3511        | 3560        |
| WIPRO       | 479   | 475       | 470       | 480         | 484         | 489         |
| YESBANK     | 1348  | 1334      | 1321      | 1345        | 1359        | 1370        |
| ZEEL        | 478   | 475       | 472       | 479         | 481         | 485         |



## CORPORATE ACTION / BOARD MEETINGS

NSE Download Ref No. : NSE/CML/3402: Face Value Split - LT Foods Limited from rs. 10 to rs.1 This circular shall be effective from February 7, 2017.

### BOARD MEETINGS

| COMPANY NAME | DATE      | PURPOSE                               |
|--------------|-----------|---------------------------------------|
| BANCOINDIA   | 20-Jan-17 | Interim Dividend Rs 5/- Per Share     |
| BAJAJCORP    | 23-Jan-17 | Interim Dividend Rs 11.50/- Per Share |
| TCS          | 23-Jan-17 | Interim Dividend Rs 6.50 Per Share    |
| GOACARBON    | 24-Jan-17 | Interim Dividend Rs 1.50/- Per Share  |
| HIL          | 25-Jan-17 | Interim Dividend Rs 10/- Per Share    |
| TRIDENT      | 25-Jan-17 | Interim Dividend                      |
| MINDTREE     | 25-Jan-17 | Interim Dividend                      |
| PERSISTENT   | 31-Jan-17 | Interim Dividend                      |
| SIEMENS      | 31-Jan-17 | Dividend - Rs 6/- Per Share           |
| HCLTECH      | 1-Feb-17  | Interim Dividend                      |
| BEL          | 2-Feb-17  | Interim Dividend                      |
| IRB          | 2-Feb-17  | Interim Dividend                      |
| WIPRO        | 2-Feb-17  | Interim Dividend                      |
| IIFL         | 2-Feb-17  | Interim Dividend                      |
| GANDHITUBE   | 2-Feb-17  | Interim Dividend                      |
| VRLOG        | 2-Feb-17  | Interim Dividend                      |
| GODREJCP     | 6-Feb-17  | Interim Dividend                      |
| SHREECEM     | 6-Feb-17  | Interim Dividend                      |
| ONGC         | 7-Feb-17  | Interim Dividend                      |
| DAAWAT       | 7-Feb-17  | Fv Splt Frm Rs 10 To Re 1             |
| TCIEXP       | 7-Feb-17  | Interim Dividend                      |
|              |           |                                       |

## NEWS & RUMOURS:

- Gold (Spot Dollar) major support = \$1175/\$1141 & Resistance = \$1240/\$1267.
- Crude oil range->\$46 to \$56.
- Dollar Gains, Treasuries Slip on U.S. Data, Draghi: Markets Wrap: - The dollar erased losses versus the euro, while Treasuries slipped after data boosted optimism in the U.S. economy and Mario Draghi signaled the European Central Bank remained committed to stimulus. American stocks fluctuated.
- Dollar holds onto gains, focus turns to Trump inauguration: - The dollar held onto gains against the other major's currencies on Thursday, helped by upbeat U.S. data, although investors remained cautious ahead Donald Trump's inauguration on Friday.
- After [European Central Bank President Mario Draghi acknowledged](#) that the growth outlook for the euro area has improved, but reiterated that quantitative easing can be increased if the outlook becomes less favorable. The comments came after the ECB [left its benchmark interest rate](#) unchanged at a record-low 0.0%, in line with forecasts, and kept the size of its monthly quantitative easing program at approximately €80 billion.
- U.S. natural gas turns higher after bullish storage data: - U.S. natural gas futures reversed losses on Thursday morning to bounce off a more than one-week low after data showed that natural gas supplies in storage in the U.S. fell more than expected last week.
- Gold remains under pressure as Yellen set to speak again: - Gold prices remained under pressure during U.S. morning trade on Thursday, holding on to earlier losses as investors awaited more comments from Federal Reserve Chair Janet Yellen for fresh clues about the timing of the next rate hike.

## TRENDS & OUTLOOK – DATE: 20-Jan-2017

### PRECIOUS METALS:

| COMMDITY (MCX) | S2    | S1    | PIVOT POINT | R1    | R2    |
|----------------|-------|-------|-------------|-------|-------|
| GOLD (Feb)     | 27970 | 28240 | 28520       | 28799 | 29066 |
| SILVER (Mar)   | 38700 | 39900 | 41200       | 42600 | 43786 |

### BASE METALS

| COMMDITY (MCX) | S2     | S1     | PIVOT POINT | R1     | R2     |
|----------------|--------|--------|-------------|--------|--------|
| COPPER (Feb)   | 381    | 386    | 393         | 399    | 405    |
| ZINC (Jan)     | 180.25 | 183.20 | 187.25      | 191.50 | 194.45 |
| LEAD (Jan)     | 148.25 | 152.10 | 155.65      | 159.55 | 163.60 |
| NICKEL (Jan)   | 639    | 659    | 680         | 702    | 720    |

### ENERGY

| COMMDITY (MCX)    | S2   | S1   | PIVOT POINT | R1   | R2   |
|-------------------|------|------|-------------|------|------|
| CRUDE OIL (Feb)   | 3299 | 3420 | 3575        | 3750 | 3875 |
| NATURAL GAS (Jan) | 214  | 221  | 226         | 236  | 241  |

### DATA TALKS : TODAY'S ECONOMIC DATA :

Fed Chair Yellen Speaks, (GDP q/y, Industrial Production y/y, Fixed Asset Investment ytd/y, NBS Press Conference, Retail Sales y/y of China), WEF Annual Meetings, FOMC Member Harker Speaks.





LET THE  
**WOMAN  
POWER RISE**

**WOMEN  
DESK**

All the Ladies in the house are  
cordially invited to come  
& explore their trading talents.

**TOLL FREE: 18001030059**





Registered Office

Indira House, 3rd Floor, 5 Topiwala Lane,  
Opp. Lemington Road Police Station, Grant Road (East), Mumbai - 400007.

Corporate Office

'Ramavat House' E-15, Saket Nagar, Indore - 452018 (M.P.)

Customer Care

Tel: +91-731-4097170/ 71/ 72/ 73/ 74 M. +91 93031 72345

Email: [customercare@indiratrade.com](mailto:customercare@indiratrade.com) [www.indiratrade.com](http://www.indiratrade.com)



INSTITUTIONAL DEALING UNIT

Africa House, 5, Topiwalla Lane, Lamington Road, Mumbai, 400007

Tel: +91 22 30080678 Fax : +91 22 23870767 Email : [ie@indiratrade.com](mailto:ie@indiratrade.com)

**Disclaimer**

This report is for private circulation within the Indira Group. This report is strictly confidential and for information of the selected recipient only and may not be altered in any way, transmitted to, copied or distributed, in part or in whole, to any other person or to the media or reproduced in any form. This report should not be construed as an offer or solicitation to buy or sell any securities or any interest in securities. It does not constitute a personal recommendation or take into account the particular investment objectives, financial situations, or any such factor. The information, opinions estimates and forecasts contained here have been obtained from, or are based upon, sources we believe to be reliable, but no representation of warranty, express or implied, is made by us to their accuracy or completeness. Opinions expressed are our current opinions as of the date appearing on this material only and are subject to change without notice.